

THE AGA KHAN UNIVERSITY

SAMPLE TEST PAPER 2025

Graduate Programme

SECTION I

English

Time allowed: 1 hour

INSTRUCTIONS:

The Aga Khan University English test is a sophisticated test of grammar and vocabulary in academic contexts. The test consists of five sub-sections, to be completed in ONE hour.

Candidates may log on to www.englishlanguagetesting.co.uk for additional practice test.

Please read the following instructions carefully.

1. Attempt all questions.
2. Mark ONLY ONE answer to each MCQ. No credit will be given for multiple answers.
3. There are five sub-sections in this question paper.
 - a. Section 1 15 questions
 - b. Section 2 12 questions
 - c. Section 3 15 questions
 - d. Section 4 09 questions
 - e. Section 5 09 questions

Discipline

The University expects honesty from applicants. Dishonest behavior during the Test or violation of instructions will result in irrevocable disqualification of the applicant from entering the selection process.

Section-I
ENGLISH

SECTION ‘1’

There are 15 questions in Section 1.

Choose the correct answers (A, B or C) and mark them on the answer sheet.

Look at the example below. Choose the best word to complete the space:

Asking for a pen

Student A: Do you have a pen?

Student B: Yes. There _____ a pen in my bag.

- A. is
- B. does
- C. have

SECTION ‘2’

There are 12 questions in Section 2.

Choose the correct answers (A, B or C) and mark them on the answer sheet.

Look at the example below. Choose the best words to complete the spaces:

The Campus

The University has ____ (i) ____ very heavily in teaching and learning facilities and ____ (ii) ____ to ensure that we offer modern, high quality environment in which our students can live and study happily and effectively.

Space (i)

- A. costed
- B. invested
- C. spent

Space (ii)

- A. accommodation
- B. accommodates
- C. accommodating

SECTION '3'

There are 15 questions in Section 3.

Choose the correct answers (A, B, C, D or E) and mark them on the answer sheet.

Look at the example below. Choose the word most like the one in italics, in this example the word is registered:

“When you arrive at the university you will be *registered* at the faculty office.”

Which word is closest to registered?

- A. Functioned
- B. Participated
- C. Resigned
- D. Recorded**
- E. Estimated

SECTION '4'

There are 9 questions in Section 4.

Choose the correct answers (A, B, C, D or E) and mark them on the answer sheet.

Look at the example below. Choose the word most often used with the one in italics, in this example lounge:

“Please go to the *lounge*”

Which word is most often used with *lounge*?

- A. train lounge
- B. meeting lounge
- C. departure lounge**
- D. information lounge
- E. waiting lounge

SECTION '5'

There are 9 questions in Section 5, each with three or four parts. Decide if each is right or wrong in English and mark them on the answer sheet.

Example:

Each question has three parts ((i), (ii) and (iii)) or four parts ((i), (ii), (iii) and (iv)). Decide if each is right or wrong in English. None, some or all may be right. Look at the example below. **In this example (i), (iii) and (iv) are RIGHT and (ii) is WRONG.**

(i)	Thank you for completing your application for the University of Newbury. Before you submit your forms, remember to keep a copy for your records.	RIGHT	WRONG
(ii)	Thank you for completing your application for the University of Newbury. Before you submit your forms, remember to remain a copy for your records.	WRONG	WRONG
(iii)	Thank you for completing your application for the University of Newbury. Before you submit your forms, remember to save a copy for your records.	RIGHT	WRONG
(iv)	Thank you for completing your application for the University of Newbury. Before you submit your forms, remember to make a copy for your records.	RIGHT	WRONG

THE AGA KHAN UNIVERSITY

SAMPLE TEST PAPER 2025

Graduate Programme

SECTION II

Quantitative Reasoning

Time allowed: 60 minutes

INSTRUCTIONS:

Please read the following instructions carefully.

1. Mark **ONLY ONE** answers to each MCQ. No credit will be given for multiple answers.
2. There will be 40 MCQ based questions in this section.
3. Attempt all questions.

Discipline

The University expects honesty from applicants. Dishonest behavior during the Test or violation of instructions will result in irrevocable disqualification of the applicant from entering the selection process.

TABLE OF SPECIFICATION

i.	Arithmetic	(30%)
ii.	Information Handling – Graphs & Tables	(40%)
iii.	Logical Reasoning - Application of Algebra / Geometry	(30%)

Section II:
QUANTITATIVE REASONING

1. Which of the following quantities is the largest?

- A. 45%
- B. 0.5%
- C. $\frac{3}{4}$
- D. 0.6666

A	B	C	D

2. $\frac{1}{4} + \left[-\frac{4}{3} \times -\frac{3}{5} \right] - \left[-\frac{1}{4} \div -\frac{4}{5} \right]$ is equal to

- A. $\frac{59}{80}$
- B. $\frac{17}{82}$
- C. $\frac{16}{15}$
- D. $\frac{6}{7}$

A	B	C	D

3. The cost of a book increased from Rs. 600 to Rs. 624. The increase in cost is

- A. 4%
- B. 24%
- C. 104%
- D. 124%

A	B	C	D

4. A toy helicopter normally cost Rs. 600. Bilal bought the toy helicopter when the price was reduced by 30%. How much did Bilal save?

A. Rs. 420
 B. Rs. 300
 C. Rs. 240
 D. Rs. 180

A	B	C	D

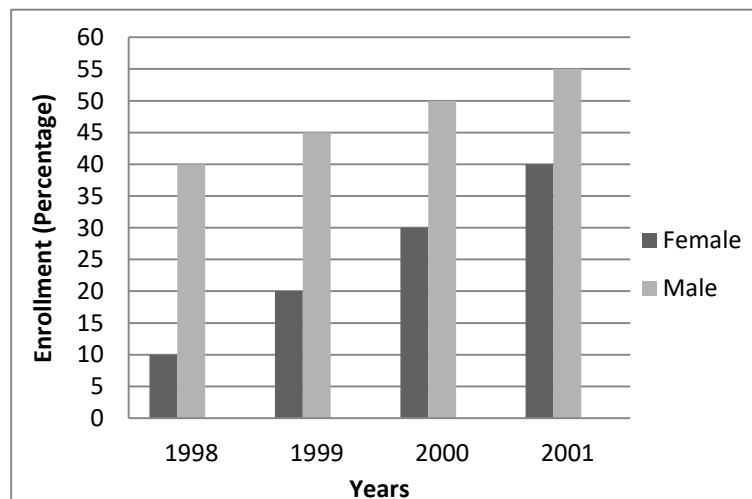
5. Three bells A, B & C ring simultaneously at 6:00 am. Now Bell A will ring after every 15 minutes, Bell B after every 20 minutes and Bell C after 30 minutes. At what time will all the three bells ring together again?

A. 6:15 am
 B. 6:20 am
 C. 6:30 am
 D. 7:00 am

A	B	C	D

6. The graph below shows percentage of female and male students' enrollment in engineering college over four years. If the trends of female and male enrollment in engineering colleges continue for the next 10 years, determine the year in which the enrollment of female students will be same as the male students?

A. 2003
 B. 2004
 C. 2005
 D. 2006



A	B	C	D

7. The sum of five positive numbers is 20. What could be the smallest possible median?
- A. 10
B. 5
C. 4
D. 1

A	B	C	D

8. The mode value of the data set “16, 3, 6, 9, 16, 27, 16, 27, 10, 27, 16” is
- A. 27
B. 16
C. 16 or 27
D. 16 and 27

A	B	C	D

THE AGA KHAN UNIVERSITY

SAMPLE TEST PAPER 2025

Master of Philosophy in Biological & Biomedical Sciences

SECTION III

Subject Specific Exam

Time allowed: 1 hour and 45 minutes

INSTRUCTIONS:

Please read the following instructions carefully.

1. Answer any two of the three questions.
2. Each of your answers should be between 250 to 350 words.

Discipline

The University expects honesty from applicants. Dishonest behavior during the Test or violation of instructions will result in irrevocable disqualification of the applicant from entering the selection process.

Section III
MCQ's

1. Eukaryotic cellular components that carry out intracellular degradation are:

- a) Nucleoli
- b) Ribosomes
- c) Lysosomes
- d) Mitochondria

A	B	C	D
<input type="checkbox"/>	<input type="checkbox"/>	<input checked="" type="checkbox"/>	<input type="checkbox"/>

2. Which one of the following is responsible for the digestion of food particles after phagocytosis?

- a) Golgi apparatus
- b) Ribosome
- c) Lysosome
- d) Mitochondria

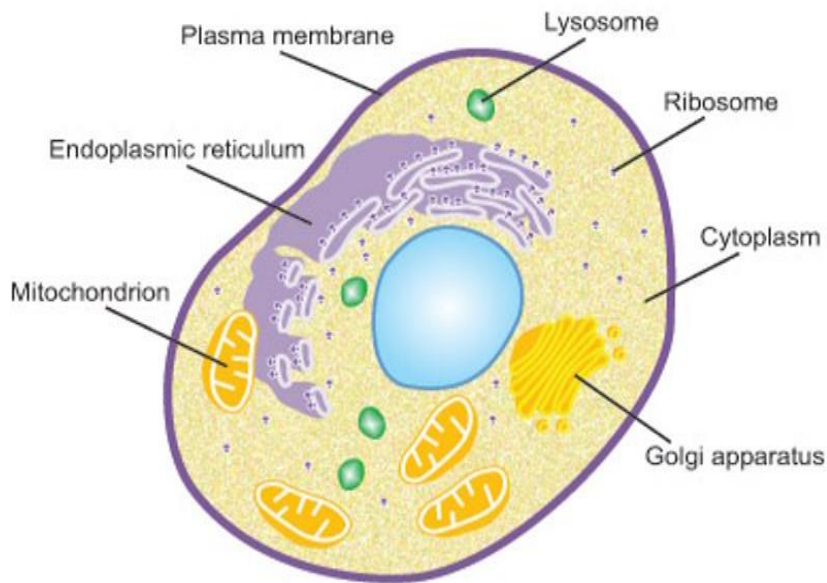
A	B	C	D
<input type="checkbox"/>	<input type="checkbox"/>	<input checked="" type="checkbox"/>	<input type="checkbox"/>

Section III

SEQ's

QUESTION:

The figure shows a eukaryotic cell.



- a) Where would you find Deoxyribonucleic acid in a cell? [2]
- b) Where would you find t-RNAs in a cell? [2]
- c) **Transcribe** the following sequence of the DNA arrangement: [3]
5'-AGGCTCGGAAATTTAGCATGA-3'
- d) Give three examples of post translational modifications. [3]

KEY

- a) Nucleus
- b) Cytoplasm
- c) 5'-UCAUGC UAAA UUCCGAGCCU-3' / 3'-UCCGAGCCU UAAA UCGUACU-5'
- d) Addition (phosphorylation, lipidation, glycosylation)
Cleavage (propeptide → peptide)
Disulphide linkages (disulphide bonds)
Carbonylation