

CCIT GLOBAL INNOVATION DECK

ccit



Asad I Mian
Director

Mahreen Sulaiman
Co-director

Aisha Pervaiz
Research Associate

Aiman Naseem
Global Innovation Fellow

Zayam Anjum
Global Innovation Fellow

Zunaira Namal
Global Innovation Fellow

Dear CCIT Community,

Welcome to the CCIT Forum's Innovation Deck, where diverse ideas take flight and find a home. Envision the boundless possibilities ahead on our journey through Innovd'Board, EmTEX, HackPeds, and beyond.

As the year concludes, a mix of emotions surrounds us – thankfulness, pride, and a touch of nostalgia. Established in 2013 at the Aga Khan University, the CCIT Forum started as a student-centric society, evolving into a sector-agnostic hub for critical, creative, and innovative thinking. Our commitment to a safe, collaborative, and empathetic space guides our transformative journey. From pre-ideation to the 2023 launch of the Global Innovation Fellowship, our path itself is marked by innovation. *"MEDJACK: the extraordinary journey of an ordinary hack,"* AKU's first digital book, stands testament to our creative spirit.

As we bid adieu to the current form of the CCIT Forum, my deepest gratitude extends to each community member. While this chapter closes, our dedication to shaping a better future through 21st-century skills and design principles remains unwavering. For those with ideas or a desire to reminisce, reach out. Let's continue the conversation, keeping the flame of inspiration alive.

Wishing you a reflective year-end and eagerly anticipating the bright possibilities that await us.

Warmest regards,

Asad I. Mian MD, PhD

Director, CCIT Forum

Innov'dBoard

Benchmarking your I|C|E Potential

Problem

Global demand for services continues to surge, placing increasing pressure on healthcare facilities. To effectively address this, innovation is indispensable, but how can we measure the capacity for innovation in healthcare and take proactive measures to improve it?

Prototyping and Testing

The baseline is obtained through the Innovation Skills Assessment, covering four crucial aspects: idea generation, calculated risk-taking, relationship building, and idea implementation. This was successfully piloted at the level of an emergency department as well as the whole hospital. The playbook aspect has been evaluated and iterated multiple times.



Innovation

To develop an innovation benchmarking dashboard for healthcare, aiming to measure and enhance the organization's Innovation, Creativity, and Entrepreneurship (I|C|E) potential through a versatile menu-based playbook or toolbox.



Innovation to Impact

Innov'dBoard is a low-risk, cost-effective, and user-friendly data-driven solution. The approach promises not only to elevate I|C|E capacity but also to enhance overall job satisfaction among team members. Our innovation benchmarking dashboard, coupled with robust assessment and implementation tools, empowers organizations to evaluate and amplify their innovation potential globally.



EmTEx

Elevating Emergency and Trauma Care in Pakistan

Problem:

Pakistan's Emergency Departments (EDs) lack standardized best practices, leading to suboptimal patient outcomes. EmTEx, leveraging the expertise of Aga Khan University Hospital's ED teams, aims to improve ED services in Pakistan, aligning them with global standards.

Innovation:

EmTEx Consultancy specializes in ED needs assessments, crafting context-sensitive emergency care programs. Our experienced faculty has worked with global institutions like JCI, ensuring quality and safety in care programs tailored to local communities.

Prototyping & Testing:

Through a systematic, multi-tiered approach, we have already initiated the evaluation of several EDs nationwide. Leveraging tailored checklists and questionnaires, we've conducted in-depth gap analyses and facility assessments. In some cases, we've progressed to the point of actively guiding the development of ED policies and procedures, aligning them with JCI standards and guidelines.

Innovation to Impact:

EmTEx collaborates with ED stakeholders to create strategic plans for enhanced emergency and trauma care, going beyond revenue generation to improve patient care, operational management, and long-term impact.



@cciforum



@cciforum



@ccitglobal



Problem

Pakistan and other Low-Middle Income Countries (LMICs) suffer immense pediatric burden, inclusive of trauma/injury. Child-centric creative innovation paired with sustainable business models (aka entrepreneurship) may be hugely beneficial for children’s healthcare in low resource settings.

Innovation

To develop and implement low-cost and low-tech (low fidelity) novel strategies that demonstrate positive impact on pediatrics/child healthcare/child wellness and wellbeing. The cornerstone of HackPeds would be ‘Jugaar’ Innovation, Creativity and Entrepreneurship (I|C|E), i.e., easy, nimble, and frugal I|C|E frameworks that are both childlike and child-centric in their ethos.

Prototyping & Testing

We have almost a decade’s experience of prototyping and experimenting with different frameworks for the pediatric population. These implementations include ignite sessions, hackathons, narrative medicine workshops, design-thinking sprints, etc. where children themselves have been co-creators of the process/product/device alongside of us.

Innovation to Impact

HackPeds is fun, cost-effective, and child-friendly. The approach promises not only to elevate I|C|E capacity in pediatrics but also to enhance overall satisfaction among child healthcare providers in tandem with their pediatric patients and those kids’ parents. HackPeds is quite modular; it can be easily adapted for global pediatrics.

HackPeds

Being Child-Centric and Childlike in Tandem



@ccitforum



@ccitforum



@ccitglobal





Zalsa



A unique wellness innovation to tackle burnout in healthcare providers

Problem

Burnout is a pervasive issue in healthcare worldwide. This negatively impacts the well-being and productivity of healthcare employees. To address this, a holistic approach is needed, integrating physical, mental, and social activities that are inclusive of all ages, genders, fitness level, marital status, and socio-economic backgrounds.

Prototyping & Testing

Zalsa was initiated in the fall of 2020, and since then it has undergone several prototyping, testing, and adaptation phases. A research study involving over 100 participants (including nurses, doctors, students, and staff) yielded promising results.

Innovation

Zalsa - a combination of Zumba and Salsa in its first iteration, hence the name - is a unique well-being and fitness program, integrating cultural elements. It offers mixed-impact exercises, building community, prioritizing inclusion, nurturing creativity, while addressing sustainable development goals and non-communicable diseases through focusing on preventative medicine.

Innovation to Impact

Grounded in research and evidence-based practices zalsa is transforming the wellness and wellbeing landscape. Its benefits have resonated across all demographics, leading to successful launches in fitness clubs and rehabilitation centers. 'Zalsapreneurship' exhibits remarkable revenue potential.



SOUMED



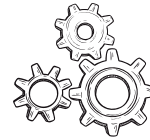
Problem

Clinical settings often inundate healthcare providers, contributing to widespread burnout and attrition among doctors and nurses. One potentially underutilized approach to address this challenge is reflective practice.



Innovation

soulMED offers a cost-effective solution for healthcare providers, using reflective practice to reengage them. We provide active and passive coaching, tracking its impact on thoughts and actions to break ingrained patterns and inspire personalized reflection.



Prototyping & Testing

We've conducted initiatives like narrative medicine (journaling by healthcare providers), meditation practices, and physical workouts. These ongoing efforts have provided valuable insights into their feasibility and potential impact on healthcare providers.



Innovation to Impact

soulMED's approach, led by a Chief Wellness Officer, promises to create a composed and resilient workforce, effectively managing stress. This cost-effective strategy benefits individuals and elevates the global perspective of healthcare.



@ccitforum



@ccitforum



@ccitglobal





MEDJACK

BOOK & WEBINAR SERIES

PROBLEM

Low- and Middle-Income Countries (LMICs) have a notable dearth of teaching and learning resources that leverage Innovation, Creativity, and Entrepreneurship (I|C|E) to address healthcare and other challenges sustainably.

INNOVATION

To create digital and print content in the form of a book that could be used for teaching, learning, and implementing I|C|E frameworks. The focus would be on 'Jugaar' innovation strategies (i.e., easy, nimble, and frugal) for healthcare and other problems in LMICs. "MEDJACK - the extraordinary journey of an ordinary hack" was the evidence-based book that curated over 10 years of our I|C|E experiences at and past the Aga Khan University.

PROTOTYPING & TESTING

The MEDJACK Global Webinar Series unpacks I|C|E potential in healthcare and beyond. It transforms MEDJACK into dynamic personalized innovation storytelling (inclusive of discussions and debates) with our guest speakers and panelists. In its third iteration, the webinars continue to attract more innovators, creators, and entrepreneurs.

INNOVATION TO IMPACT

Evident through unlimited outreach of the video archive of the sessions, this is also boosting sales and visibility. It cultivates an innovative culture and community, highlighting impactful work of healthcare and other innovators and entrepreneurs. With 20+ successful global collaborations established already, we are expanding to create a more inclusive, diverse, and equitable I|C|E ecosystem.



@ccitforum



@ccitforum

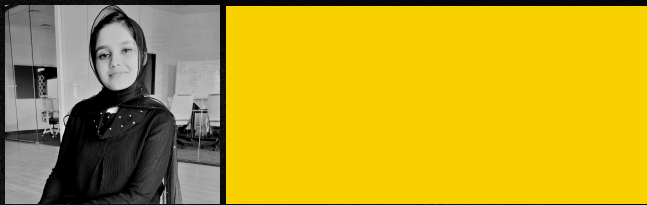


@ccitglobal



INNOVATION CATALYSTS

Transforming Professionals for Tomorrow's Challenges



PROBLEM

In a rapidly changing world, professionals need a diverse skill set to tackle complex problems. Traditional expertise alone may not suffice. There's a growing need for individuals who can navigate the evolving landscape and drive innovation.

INNOVATION

The Critical Creative Innovative Thinking (CCIT) forum at Aga Khan University recognized this need and introduced the Innovation Fellowship (IF). The IF equips young professionals with 21st-century skills, combining knowledge of systems, technology, business development, leadership, and design thinking. It fosters solution seekers capable of addressing contemporary challenges, especially in low-resource settings.

PROTOTYPING & TESTING

The IF program began in January 2020 and trained multidisciplinary fellows in creativity, design thinking, innovation, business incubation, and entrepreneurship. It offered practical experience through revenue streams, mentoring, and exposure to innovation ecosystems. The curriculum included critical appraisal of health innovation literature, quality improvement, and real-world problem-solving.

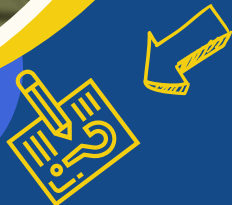
INNOVATION TO IMPACT

The IF aims to create professionals who can predict and solve problems proactively, leveraging technology and data. Fellows become change agents in their fields, guided by the UN's Sustainable Development Goals. While the first iteration had successes and challenges, it laid the foundation for future improvements. The goal is to expand the program to other institutions and publish its curriculum as an open-source guide.



careED

Empathy and Compassion Through Design in Low Resourced EDs



Problem

Emergency Departments (EDs) in Low- and Middle-Income Countries (LMICs) are overcrowded, resource-constrained, and face long wait times, leading to staff burnout and patient dissatisfaction.



Innovation

To apply Stanford University's 5-step Human-Centered Design Thinking process to develop cost-effective, evidence-based solutions for LMIC EDs, improving both staff and patient experiences.



Prototyping & Testing

After ample divergent and convergent ideation cycles at the ED, creation of a volunteer program was our solution of choice. A pilot of this is being developed for the pediatric ED to be implemented in phases, prior to scaling it to the rest of the ED. We shall measure success using metrics such as healthcare worker burnout and patient satisfaction before and after implementation.



Innovation to Impact

The careED model has the potential to improve staff well-being, introduce new revenue strategies, and modulate emergency and acute healthcare, ensuring sustainable and enhanced patient care in EDs globally.



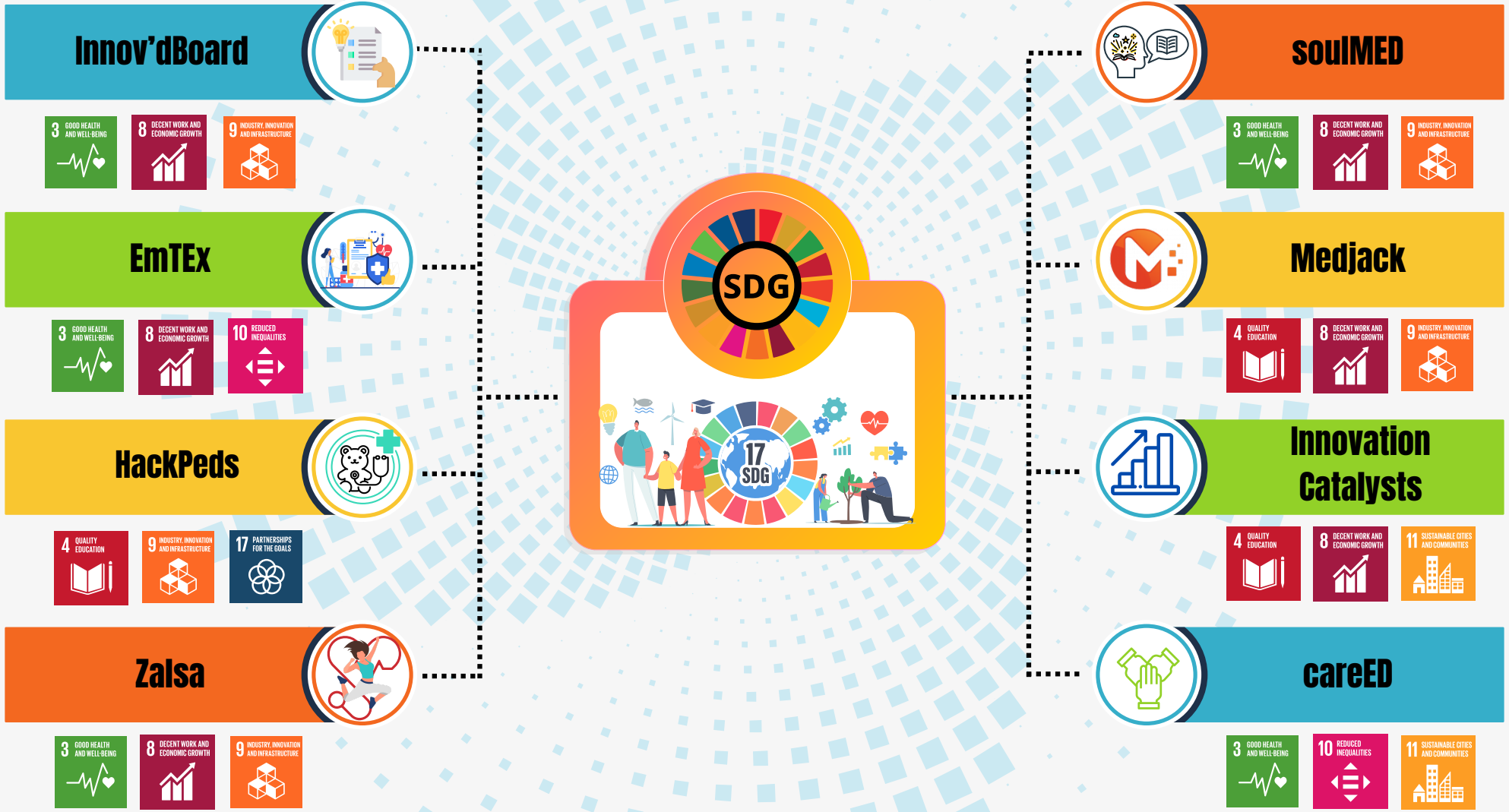
@ccitforum



@ccitforum



@ccitglobal



Integrating innovation, creativity, and entrepreneurship, these initiatives contribute to a holistic approach for sustainable and improved healthcare globally.

Team ccit!



@ccitforum



@ccitforum



@ccitglobal

